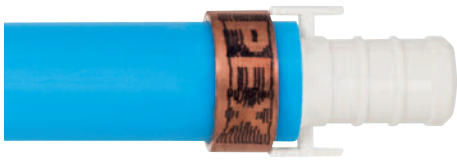


AccuCrimp™

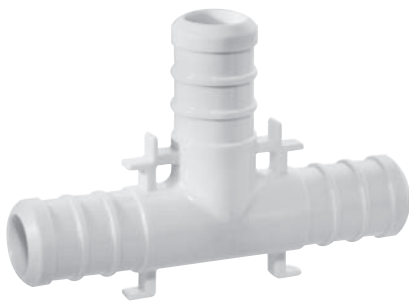
NEW

F2159 PEX Fittings



- AccuCrimp fittings feature unique positioning tabs that help to locate a crimp ring or press sleeve over the sealing barbs, eliminating leaks associated with improper installation due to location of the ring/sleeve.
- PPSU material is ideally suited for aggressive water conditions, is suited for no-lead compliance and as a solution for competitive plumbing situations.
- White fittings will fade darker with over-exposure to UV so that identifying compromised fittings is easier.
- Manufactured in North America and comply with ARRA, BAA requirements.
- Sioux Chief AccuCrimp fittings are certified and listed to the cNSF®us pwG, U.P. Code and CSA B137.4.
- Caution: Solvents, glues, lubricants, pipe dopes, thread oils and paste should not come in contact with PPSU fittings. AccuCrimp F2159 fittings must be stored away from petroleum products and direct sunlight.

NO LEAD



641XP222

Tee

item No.	Description (Branch × Branch × Tee)	Pkg	Min. Qty	Case Qty	List Price
641XP222	1/2" PEX × 1/2" PEX × 1/2" PEX	B	50	500	1.02 Ea
641XP223	1/2" PEX × 1/2" PEX × 3/4" PEX	B	20	200	1.54 Ea
641XP322	3/4" PEX × 1/2" PEX × 1/2" PEX	B	20	200	1.54 Ea
641XP323	3/4" PEX × 1/2" PEX × 3/4" PEX	B	20	200	1.54 Ea
641XP332	3/4" PEX × 3/4" PEX × 1/2" PEX	B	20	200	1.54 Ea
641XP333	3/4" PEX × 3/4" PEX × 3/4" PEX	B	20	200	1.54 Ea
641XP334	3/4" PEX × 3/4" PEX × 1" PEX	B	20	200	3.34 Ea
641XP433	1" PEX × 3/4" PEX × 3/4" PEX	B	20	200	3.34 Ea
641XP434	1" PEX × 3/4" PEX × 1" PEX	B	20	200	3.41 Ea
641XP442	1" PEX × 1" PEX × 1/2" PEX	B	20	200	3.34 Ea
641XP443	1" PEX × 1" PEX × 3/4" PEX	B	20	200	3.34 Ea
641XP444	1" PEX × 1" PEX × 1" PEX	B	20	200	3.34 Ea



645XP2

Coupling

item No.	Description	Pkg	Min. Qty	Case Qty	List Price
645XP2	1/2" PEX × 1/2" PEX	B	100	1000	0.60 Ea
645XP3	3/4" PEX × 3/4" PEX	B	50	50	0.75 Ea
645XP32	3/4" PEX × 1/2" PEX	B	50	500	0.95 Ea
645XP4	1" PEX × 1" PEX	B	25	250	1.45 Ea
645XP42	1" PEX × 1/2" PEX	B	25	250	1.78 Ea
645XP43	1" PEX × 3/4" PEX	B	25	250	1.46 Ea



642XP2

Elbow

item No.	Description	Pkg	Min. Qty	Case Qty	List Price
642XP2	1/2" PEX × 1/2" PEX	B	25	250	0.80 Ea
642XP3	3/4" PEX × 3/4" PEX	B	25	250	1.23 Ea
642XP32	3/4" PEX × 1/2" PEX	B	25	250	1.15 Ea
642XP4	1" PEX × 1" PEX	B	25	25	3.33 Ea



640XP12

Plug

item No.	Description	Pkg	Min. Qty	Case Qty	List Price
640XP12	1/2" PEX	B	100	1000	0.57 Ea
640XP13	3/4" PEX	B	100	1000	0.95 Ea
640XP14	1" PEX	B	25	250	1.37 Ea



646XP2



632XP222M

MIP Adapter

MIP × F2159

item No.	Description	Pkg	Min. Qty	Case Qty	List Price
STRAIGHT aDaPTEr					
646XP2	1/2" MIP × 1/2" PEX	B	100	100	1.06 Ea
646XP23	1/2" MIP × 3/4" PEX	B	50	50	1.33 Ea
646XP3	3/4" MIP × 3/4" PEX	B	25	250	1.37 Ea
646XP32	3/4" MIP × 1/2" PEX	B	50	50	1.27 Ea
646XP4	1" MIP × 1" PEX	B	25	250	2.00 Ea
ELBOW aDaPTEr					
632XP222M	1/2" MIP × 1/2" PEX	B	25	250	1.52 Ea
632XP232M	1/2" MIP × 3/4" PEX	B	25	250	1.70 Ea
632XP332M	3/4" MIP × 3/4" PEX	B	25	250	1.88 Ea



637XP20



637XP25

Faucet Adapter

FIP Swivel × F2159

Item No.	Description	Pkg	Min. Qty	Case Qty	List Price
STRAIGHT ADAPTER					
637XP20	1/2" FIP swivel × 1/2" PEX	B	25	250	1.23 Ea
ELBOW ADAPTER					
637XP25	1/2" FIP swivel × 1/2" PEX	B	50	500	1.87 Ea

Distributed by

24110 South Peculiar Drive
 Peculiar, Missouri 64078
 tel: 1-800-821-3944
 fax: 1-800-758-5950
 www.siouxchief.com

